

# OFFICE SPACE FOR LEASE



## RESEARCH COMMONS

12249 Science Drive  
Orlando, FL 32826

Research Commons is a highly secure GSA building with a renovated lobby and corridors and a generator that provides full building redundancy.

The building is well-positioned in the Central Florida Research Park, providing direct access to Naval Support Activity Center (Nav-Air) and all major Orlando roadways.

**For a virtual tour of the lobby, [click here.](#)**

## NEW BUILDING FEATURE

Tower has enhanced common area cleanings and put in place CDC recommended precautions to create a healthier building environment. All air filters have been upgraded to MERV – 9 rating or better.

**RSF AVAILABLE  
4,168**



For more information, contact:

**Tiffany Zullo**

(407) 659.0120 x114 | [TZullo@trpcrc.com](mailto:TZullo@trpcrc.com)

[www.trpcrc.com](http://www.trpcrc.com)



## SPACE AVAILABLE

Suite	RSF
370	4,168
NEGOTIABLE LEASE RATE	



## BUILDING FEATURES & AMENITIES

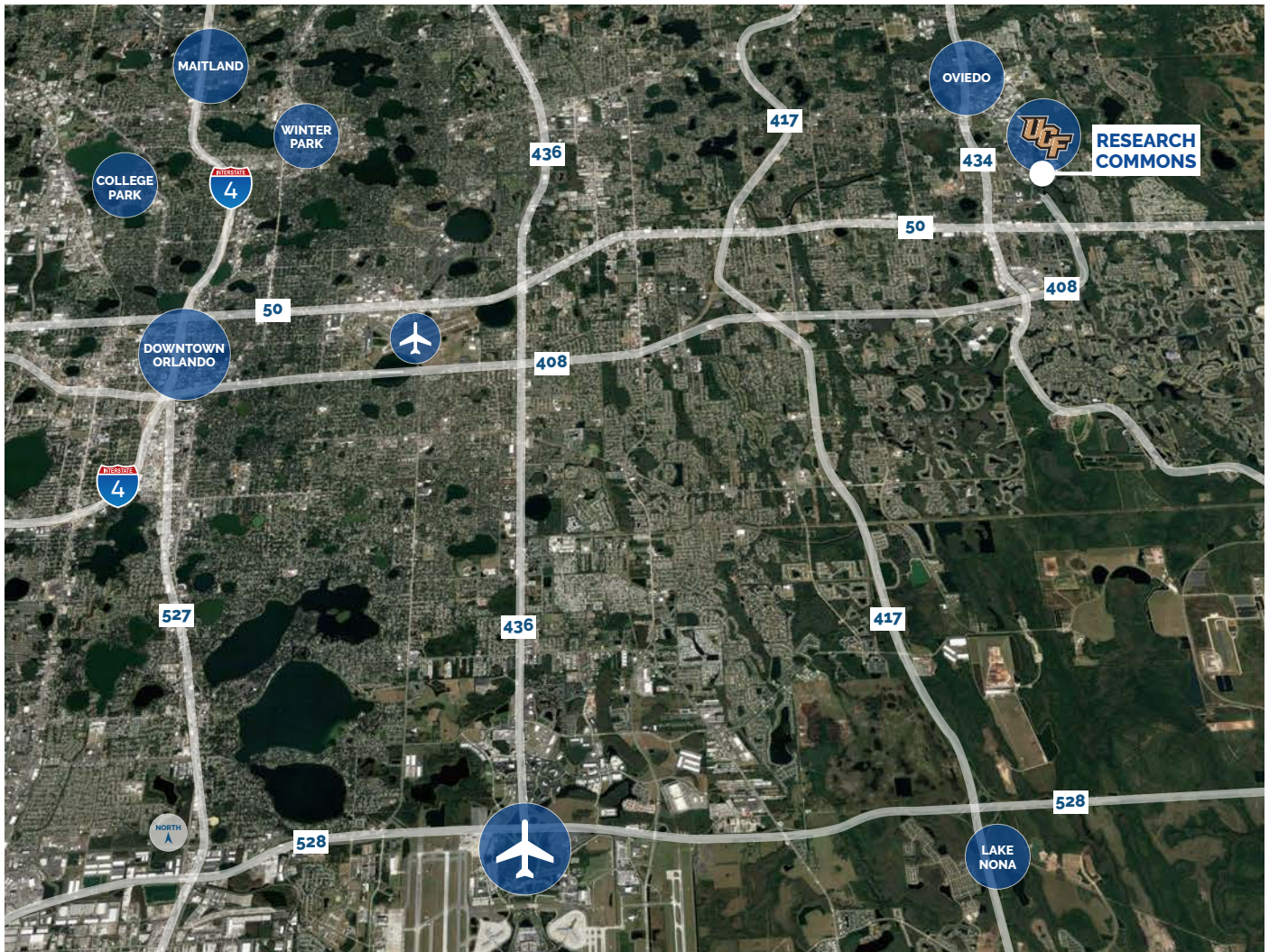
- ▶ **New Generator that Provides Full Building Redundancy**
- ▶ Renovated Lobby and Corridors
- ▶ High Security GSA Facility
- ▶ Adjacent + Direct Access to Nav-Air
- ▶ Anti-Terrorism / Force Protection Fencing
- ▶ Suited for DoD Contractors
- ▶ **New Building Feature: Advanced and Targeted Cleanings of Common Area Spaces + MERV – 9 Air Filters**



For more information, contact:  
**Tiffany Zullo**  
 (407) 659.0120 x114 | TZullo@trpcre.com

[www.trpcre.com](http://www.trpcre.com)





## LOCATION HIGHLIGHTS

- ▶ Research Commons is adjacent to the Naval Support Activity Center in Orlando’s renowned Central Florida Research Park & directly south of the University of Central Florida
- ▶ The Central Florida Research Park is a campus-like environment situated on 1,027 acres and home to over 145 businesses. There are on-site hotels as well as banks and restaurants for the 10,000+ employees who work on campus
- ▶ Ideal access to all major thoroughfares
  - Express Road 408: 1.5 miles
  - Express Road 417: 6.2 miles
  - Orlando Int’l. Airport: 19 miles

For more information, contact:

**Tiffany Zullo**

(407) 659.0120 x114 | TZullo@trpcre.com

[www.trpcre.com](http://www.trpcre.com)



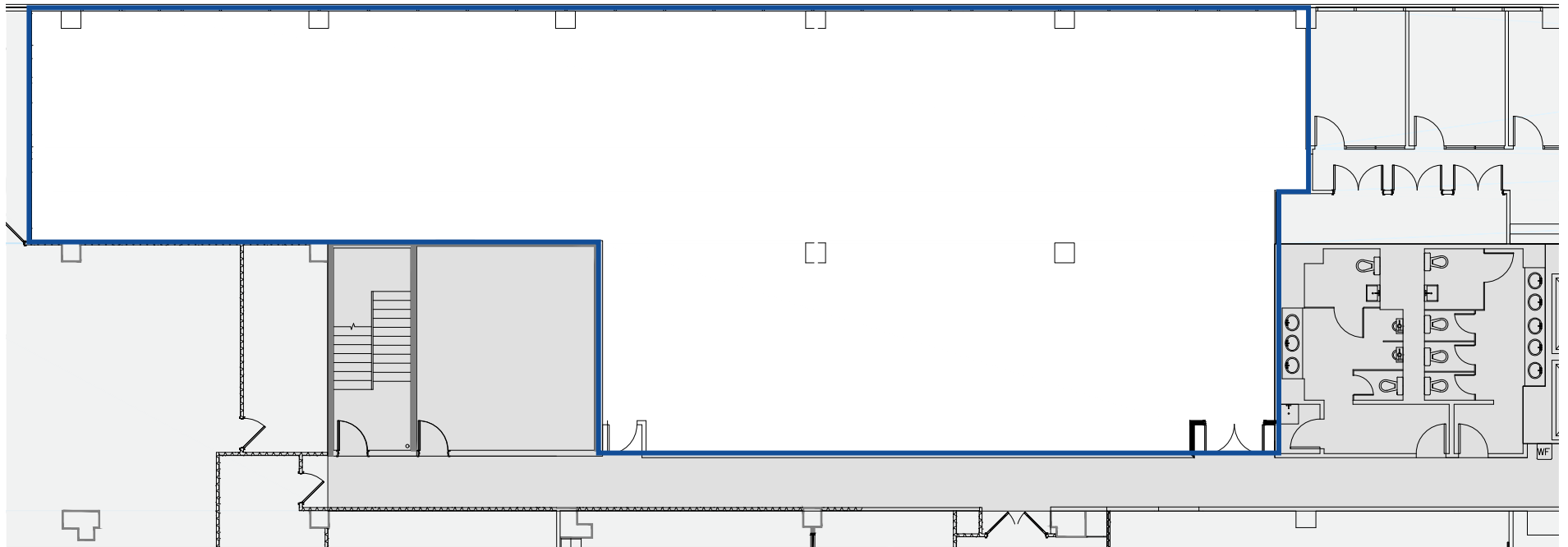
3rd  
Floor

Suite 370: 4,168 RSF



Glass Window Line

Glass Window Line



For more information, contact:

**Tiffany Zullo**

(407) 659.0120 x114 | TZullo@trpcpre.com

[www.trpcpre.com](http://www.trpcpre.com)

